



SonicWALL TZ Series

NETWORK SECURITY

Uncompromising Security and Performance

- **Uncompromising performance**
- **SonicWALL Reassembly-Free Deep Packet Inspection™**
- **SonicWALL Unified Threat Management (UTM)**
- **SonicWALL Comprehensive Anti-Spam Service**
- **SonicWALL Application Firewall**
- **Modular 3G wireless broadband**
- **Secure 802.11b/g/n wireless LAN (WLAN)**
- **Advanced IPSec and SSL VPN**
- **SonicWALL PortShield port-level security**
- **Automated failover and failback**
- **Intuitive configuration wizards**
- **Robust Voice and Video over IP (VoIP)**
- **Global Management System**

Network security can not stand still while driving factors like Web 2.0 advancements, expanding bandwidth and emerging threats rapidly evolve and overtake its capabilities. By leveraging SonicWALL's advanced processing technology, the all new TZ Series **dramatically expands comprehensive protection** at a performance level that will not compromise **network throughput**. Each TZ appliance is available as a SonicWALL TotalSecure™ solution, conveniently bundling all hardware and services needed for comprehensive protection.

The all new SonicWALL® TZ Series, including the **TZ 100, TZ 200** and **TZ 210** network security appliances, shatters these limitations by offering the revolutionary, fastest multi-layered network security in its class. Utilizing SonicWALL's industry-leading Unified Threat Management (UTM) and patented Reassembly-Free Deep Packet Inspection™, the TZ Series delivers in-depth protection at unparalleled performance. The all new TZ Series dramatically outperforms their TZ 180 and 190 predecessors, with the entry level TZ 100 delivering two-and-a-half times the UTM throughput of its predecessors. The TZ Series cost-effectively integrates IPSec and SSL VPN remote access, VoIP, and optional 802.11b/g/n wireless with optional 3G wireless broadband. Designed for the needs of distributed enterprise sites, branch offices, small and medium-sized businesses, retailers and managed service providers, the TZ Series is the first affordable solution that can maximize the highest speeds available from modern ISPs while delivering full UTM protection.

Features and Benefits

Uncompromising performance, applying real-time scanning over state-of-the-art high-speed architecture, delivers up to Gigabit Ethernet speeds.

SonicWALL Reassembly-Free Deep Packet Inspection™ provides enterprise-class protection for key Internet services such as Web, e-mail, file transfers, Microsoft Windows services and messaging.

SonicWALL Unified Threat Management (UTM) delivers real-time gateway protection against the latest viruses, spyware, intrusions, software vulnerabilities and other malicious code.

SonicWALL Comprehensive Anti-Spam Service utilizes real-time sender IP reputation analysis and cloud-based Advanced Content Management techniques to remove spam, phishing and virus-laden messages from inbound SMTP-based e-mails before they reach your network. This service eliminates the need for less effective, slow responding and error prone real-time black list services.

SonicWALL Application Firewall offers granular application-level access controls to manage bandwidth and prevent leaks of sensitive or proprietary information.

Modular 3G wireless broadband and analog modem support can be used as either a primary or secondary WAN connection for business continuity or rapid deployment in remote locations.

Secure 802.11b/g/n wireless LAN (WLAN) technologies provide secure high-speed wireless connectivity with SonicWALL's wireless security enforcement.

Advanced IPSec and SSL VPN connectivity options provide secure, high-speed office-to-office and individual user remote access.

SonicWALL PortShield port-level security offers flexible protection from traffic on the WAN, DMZ and devices inside your network by easily grouping ports into logical units.

Automated failover and failback ensures continuous uptime of VPN tunnels by diverting traffic over alternate WAN or WLAN connections in the event of primary connection failure.

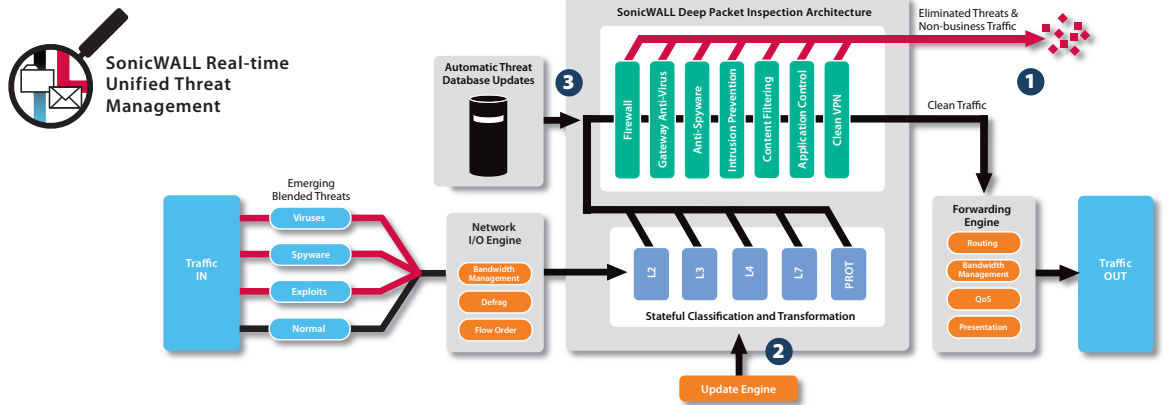
Intuitive configuration wizards simplify even the most complicated tasks, including VPN set-up, NAT configuration and public server configuration.

Robust **Voice and Video over IP (VoIP)** capabilities offer secure, standards-based support for sending voice (audio), streaming video and other media over IP-based networks.

Global Management System (GMS) provides comprehensive global management and reporting tools for simplified configuration, enforcement and management from a central location.

*U.S. Patent 7,310,815-A method and apparatus for data stream analysis and blocking.





Best-in-Class Threat Protection

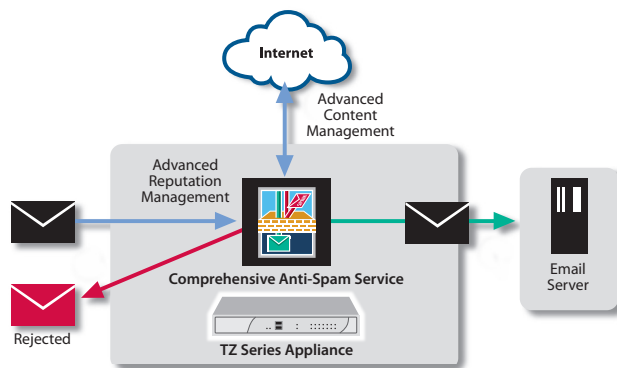
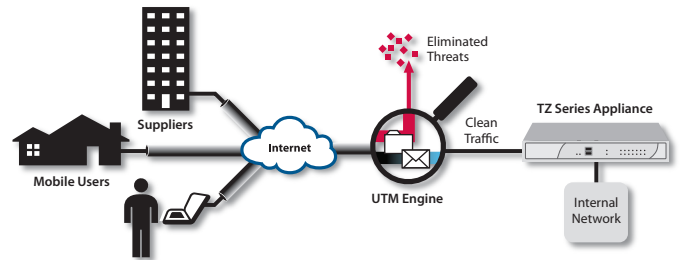
- 1 SonicWALL deep packet inspection protects against network risks such as viruses, worms, Trojans, spyware, phishing attacks, emerging threats and Internet misuse. Application Firewall adds highly-configurable controls to prevent data leakage and manage bandwidth at the application level.
- 2 The SonicWALL Reassembly-Free Deep Packet Inspection™ (RFDPI) engine comprehensively scans entire packets in real-time without stalling traffic

in memory. This functionality allows threats to be identified and eliminated over unlimited file sizes and unrestricted concurrent connections, without interruption.

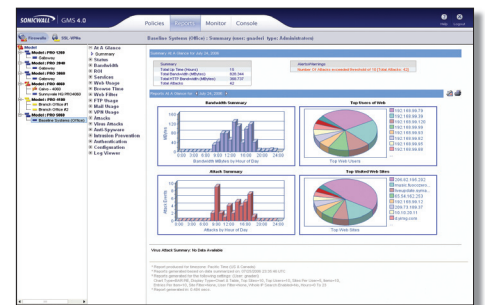
- 3 The TZ Series provides dynamic network protection through continuous, automated security updates, protecting against emerging and evolving threats without requiring any administrator intervention.

SonicWALL Clean VPN™

The TZ Series includes innovative SonicWALL Clean VPN™ technology that protects against vulnerabilities and decontaminates malicious code in traffic from remote users, mobile users and branch offices before it enters the corporate network, all without user intervention. The TZ Series supports both IPSec and SSL VPN termination.



New SonicWALL Comprehensive Anti-Spam Service enables SonicWALL's fully-featured, market-leading protection against spam, phishing, viruses and malware with one simple check box. Using the same technology behind SonicWALL's award-winning Email Security product portfolio, you'll enjoy a 98% effectiveness rate against spam, and reduced bandwidth consumption by eliminating up to 80% of threats at the connection level. With no additional hardware, software or servers to purchase, you'll benefit from an integrated, single point of management, configuration and reporting.



Centralized Policy Management

The TZ Series can be managed using the SonicWALL Global Management System (GMS), which provides flexible, powerful and intuitive tools to manage configurations, view real-time monitoring metrics and integrate policy and compliance reporting, all from a central location.

**SonicWALL's
TZ Series is the
ultimate security
platform for
distributed
and small
networks,
including remote
and branch
offices and
retail/POS
deployments**

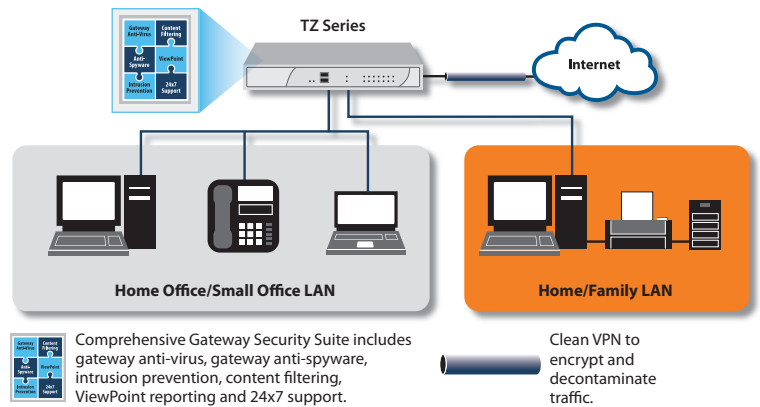
Deployments

Home Office/Small Office

Designed as a complete Unified Threat Management (UTM) platform delivering business-class protection to home office networks, the TZ Series features PortShield technology, which provides secure segmentation of the home network from “work” equipment.

Technologies utilized:

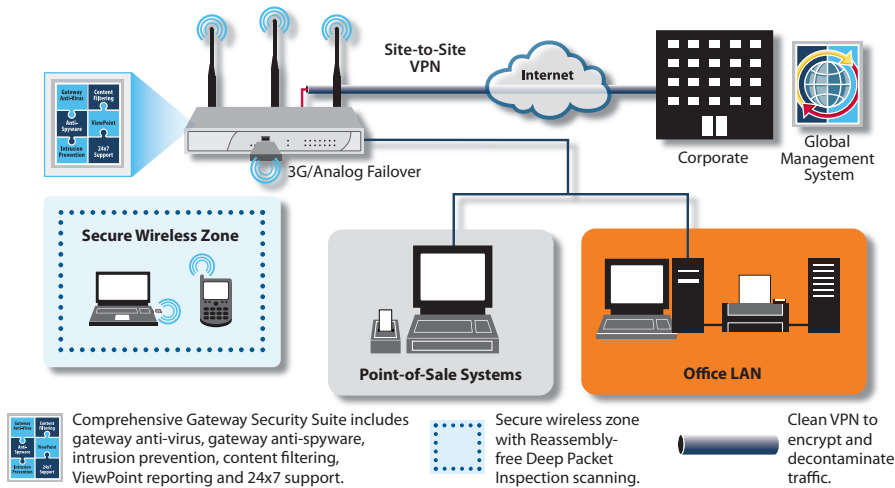
- Unified Threat Management (Gateway Anti-Virus, Anti-Spyware, Intrusion Prevention, Content Filtering, and Enforced Client Anti-Virus)
- PortShield
- SSL VPN and IPSec VPN
- Optional 802.11n Clean Wireless



TZ 100

TZ 200

TZ 210



Small Office/Retail

The TZ Series is a high-performance security platform for small professional offices and retail deployments with mission-critical needs. The TZ 200 and TZ 210 Series feature 3G connectivity through an integrated USB slot for use as either the primary or backup WAN connection.

Technologies utilized:

- Unified Threat Management (Gateway Anti-Virus, Anti-Spyware, Intrusion Prevention, Content Filtering, and Enforced Client Anti-Virus)
- 3G failover
- WAN and VPN failover
- PortShield
- 802.11n Clean Wireless
- Global Management System

TZ 100

TZ 200

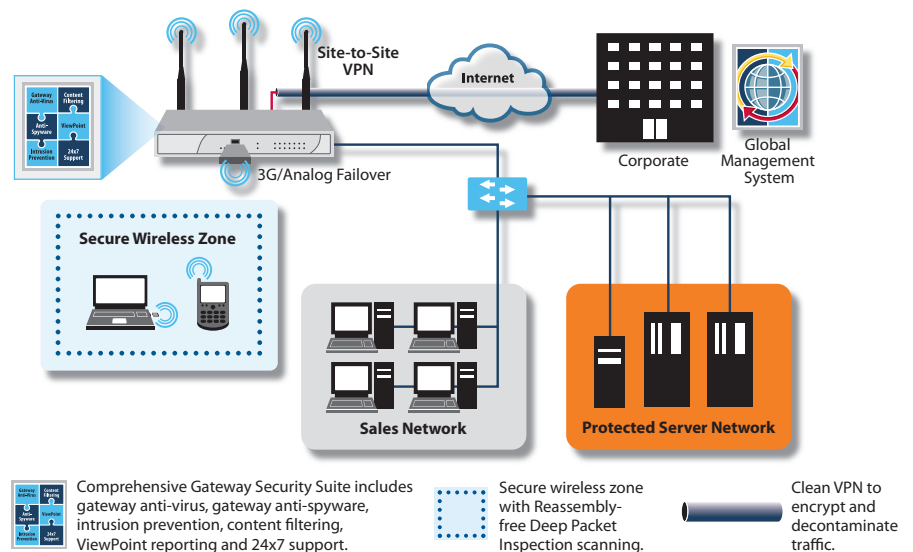
TZ 210

Remote/Branch Office

The TZ 200 and TZ 210 Series are the fastest multi-layered network security solutions in their class, giving remote and branch offices unparalleled Unified Threat Management protection against continually evolving threats. PortShield offers network segmentation, while Application Firewall on the TZ 210 provides application classification and policy management to control applications. Get security and segmentation, along with performance and reliability.

Technologies utilized:

- Unified Threat Management (Gateway Anti-Virus, Anti-Spyware, Intrusion Prevention, Content Filtering, and Enforced Client Anti-Virus)
- Comprehensive Anti-Spam Service
- SSL VPN and IPSec VPN
- 802.11n Clean Wireless
- Optional hardware failover
- Global Management System



TZ 100

TZ 200

TZ 210

Specifications



SonicWall TZ 100
01-SSC-8734
SonicWall TZ 100 Wireless-N
01-SSC-8736 (International)
SonicWall TZ 100 TotalSecure
01-SSC-8739
SonicWall TZ 100 Wireless-N
TotalSecure 01-SSC-8728
(International)



SonicWall TZ 200
01-SSC-8741
SonicWall TZ 200 Wireless-N
01-SSC-8743 (International)
SonicWall TZ 200 TotalSecure
01-SSC-8746
SonicWall TZ 200 Wireless-N
TotalSecure 01-SSC-8729
(International)



SonicWall TZ 210
01-SSC-8753
SonicWall TZ 210 Wireless-N
01-SSC-8755 (International)
SonicWall TZ 210 TotalSecure
01-SSC-8769
SonicWall TZ 210 Wireless-N
TotalSecure 01-SSC-8782
(International)

Firewall	All New TZ Series			
	TZ 180 Series	TZ 100 Series	TZ 200 Series	TZ 210 Series
SonicOS Version	SonicOS Standard	SonicOS Enhanced	SonicOS Enhanced	SonicOS Enhanced
Stateful Throughput¹	90 Mbps	100 Mbps	100 Mbps	200 Mbps
GAV Throughput²	10 Mbps	35 Mbps	50 Mbps	70 Mbps
IPS Throughput²	15 Mbps	50 Mbps	70 Mbps	110 Mbps
UTM Throughput²	10 Mbps	25 Mbps	35 Mbps	50 Mbps
IMIX Throughput²	-	40 Mbps	50 Mbps	110 Mbps
Maximum Connections	6,000	6,000	8,000	10,000
New Connections/Sec	250	1,000	1,000	1,500
Nodes Supported	10/25/Unrestricted		Unrestricted	
Denial of Service Attack Protection		22 classes of DoS, DDoS and scanning attacks		
SonicPoints Supported	16	1	2	16
VPN	TZ 180 Series	TZ 100 Series	TZ 200 Series	TZ 210 Series
3DES/AES Throughput³	30 Mbps	75 Mbps	75 Mbps	75 Mbps
Site-to-Site VPN Tunnels	2 (10 Node), 10 (25 Node)	5	10	15
Bundled GVC Licenses (Maximum)	0 (10 Node), 1 (25 Node)			
Bundled SSL VPN Licenses (Maximum)	5 (10 Node), 25 (25 Node)	0 (5)	2 (10)	2 (25)
Encryption/Authentication		DES, 3DES, AES (128, 142, 256-bit), MD5, SHA-1		
Key Exchange		IKE, Manual Key, Certificates (X.509), L2TP over IPSec		
Certificate Support		Verisign, Thawte, Cybertrust, RSA Keon, Entrust and Microsoft CA for SonicWall-to-SonicWall VPN		
VPN Features		Dead Peer Detection, DHCP Over VPN, IPSec NAT Traversal, Redundant VPN Gateway		
Global VPN Client Platforms Supported		Microsoft® Windows 2000, Windows XP, Vista 32/64-bit		
SSL VPN Platforms		Microsoft Windows 2000/ XP/ Vista 32/64-bit, Mac OS X 10.4+, Linux FC3+/ Ubuntu 7+/ OpenSUSE		
Security Services	TZ 180 Series	TZ 100 Series	TZ 200 Series	TZ 210 Series
Deep Packet Inspection Services		Gateway Anti-Virus, Anti-Spyware and Intrusion Prevention		
Content Filtering Service (CFS)		HTTP URL, HTTPS IP, keyword and content scanning, ActiveX, Java Applet, and cookie blocking		
Enforced Client Anti-Virus and Anti-Spyware		HTTP/S, SMTP, POP3, IMAP and FTP, Enforced McAfee™ Client E-mail attachment blocking		
Comprehensive Anti-Spam Service	-	Supported	Supported	Supported
Application Firewall	-	-	-	Supported
Networking	TZ 180 Series	TZ 100 Series	TZ 200 Series	TZ 210 Series
IP Address Assignment		Static, (DHCP, PPPoE, L2TP and PPTP client), Internal DHCP server, DHCP relay		
NAT Modes	1, 1many, many, many, transparent mode	1:1, 1many, many:1, many:many, flexible NAT (overlapping IPs), PAT, transparent mode		
VLANs	PortShield*		PortShield	
DHCP		Internal server, relay		
Routing	RIPv1/v2 advertisement, static routes		OSPF, RIP v1/v2, static routes, policy-based routing, multicast	
Authentication		XAUTH/RADIUS, Active Directory, SSO, LDAP, internal user database		
User Database	100/150* users	25 users	100 users	150 users
VoIP		Full H.323v1-5, SIP, gatekeeper support, outbound bandwidth management, VoIP over WLAN, deep inspection security, full interoperability with most VoIP gateway and communications devices		
System	TZ 180 Series	TZ 100 Series	TZ 200 Series	TZ 210 Series
Zone Security	Yes*	Yes	Yes	Yes
Schedules	Yes	Yes	Yes	Yes
Object-based/Group-based Management	Yes*	Yes	Yes	Yes
DDNS		Dynamic DNS providers include: dyndns.org, yi.org, no-ip.com and changelp.com		
Management and Monitoring		Local CLI, Web GUI (HTTP, HTTPS), SNMP v2; Global management with SonicWall GMS		
Logging and Reporting		ViewPoint, Local Log and Syslog		
Hardware Failover	-	-	Active/Passive	Active/Passive
Anti-Spam		RBL support, Allowed/Blocked Lists, Optional SonicWall Anti-Spam Desktop available*		
Load Balancing		Yes, Outgoing and Incoming*		
Standards		TCP/IP, UDP, ICMP, HTTP, HTTPS, IPSec, ISAKMP/IKE, SNMP, DHCP, PPPoE, L2TP, PPTP, RADIUS, IEEE 802.3		
Built-in Wireless LAN	TZ 180 Series	TZ 100 Series	TZ 200 Series	TZ 210 Series
Standards	802.11b/g (WEP, WPA, WPA2, 802.11i, TKIP, PSK, 02.1x, EAP-PEAP, EAP-TLS)	802.11b/g/n (WEP, WPA, WPA2, 802.11i, TKIP, PSK, 02.1x, EAP-PEAP, EAP-TLS)		
Antennas (5 dBi Diversity)		Dual, detachable, external		Triple, detachable, external
Radio Power			18 dBm maximum	
802.11b	13 dBm maximum		18 dBm @ 6-48 Mbps	
802.11g	20 dBm maximum @ 6-48 Mbps, 19dBm @ 54 Mbps		14 dBm @ 54 Mbps	
802.11n	-		19 dBm MCS 0, 12 dBm MCS 15	
Radio Receive Sensitivity			-90 dBm @ 11Mbps	
802.11b	-89 dBm @ 11 Mbps			
802.11g	-91 dBm @ 6 Mbps, 73 dBm @ 54 Mbps		-91 dBm @ 6Mbps, -74 dBm @ 54 Mbps	
802.11n	-		-89 dBm MCS 0, -70 dBm MCS 15	
Hardware	TZ 180 Series	TZ 100 Series	TZ 200 Series	TZ 210 Series
Interfaces	(7) 10/100	(5) 10/100	(5) 10/100	(2) 10/100/1000, (5) 10/100
Flash Memory/RAM	16 MB/128 MB	16 MB/128 MB	16 MB/256 MB	32 MB/256 MB
3G Wireless/Modem			With USB 3G Adapter/Modem	
USB Ports	-	-	1	2
Power Input		100 to 240 VAC, 50-60 Hz, 1 A		
Max Power Consumption	7.7 W/10.0 W (TZ 180 W)	7.5 W/9.5 W (TZ 100 W)	8.6 W/10.6 W (TZ 200 W)	9.4 W/11.7 W (TZ 210 W)
Total Heat Dissipation	26 BTU/34 BTU (TZ 180 W)	26 BTU/33 BTU (TZ 100 W)	30 BTU/37 BTU (TZ 200 W)	32 BTU/40 BTU (TZ 210 W)
Certifications	ICSA Firewall 4.1, Common Criteria EAL4+, FIPS 140-2 Level 2, VPNC AES*		VPNC AES	
Certifications (Pending)	-		ICSA Firewall 4.1, FIPS	
Form Factor and Dimensions	8.3 x 4.9 x 1.1 in (21.1 x 12.4 x 2.8 cm)	6.30 x 5.63 x 1.46 in (16 x 14.3 x 3.7 cm)	6.30 x 5.63 x 1.46 in (16 x 14.3 x 3.7 cm)	8.9 x 5.9 x 1.9 in (22.5 x 14.9 x 3.6 cm)
Weight	1.6 lbs/0.73 kg (TZ 180 W) 1.9 lbs/0.86 kg (TZ 180 W)	2.0 lbs/0.91 kg (TZ 100 W) 2.5 lbs/1.1 kg (TZ 100 W)	2.0 lbs/0.91 kg (TZ 200 W) 2.5 lbs/1.1 kg (TZ 200 W)	2.0 lbs/0.91 kg (TZ 210 W) 2.8 lbs/1.3 kg (TZ 210 W)
WEEE Weight	2.2 lbs/1.0 kg (TZ 180 W) 2.4 lbs/1.1 kg (TZ 180 W)	1.5 lbs/0.7 kg (TZ 100 W) 1.8 lbs/0.8 kg (TZ 100 W)	1.5 lbs/0.7 kg (TZ 200 W) 1.8 lbs/0.8 kg (TZ 200 W)	2.8 lbs/1.3 kg (TZ 210 W) 3.1 lbs/1.4 kg (TZ 210 W)
Major Regulatory Compliance		FCC Class B, ICES Class B, CE, C-Tick, VCCI Class B, MIC, NOM, UL, cUL, TUV/GS, CB, WEEE, RoHS		
Environment/Humidity		32-105° F, 0-40° C/ 5-95% non-condensing		
MTBF	8.5 Years		8 Years Minimum	

¹Testing Methodologies: Maximum performance based on RFC 2544 (for firewall). Actual performance may vary depending on network conditions and activated services. ²Throughput measured using Spirent HTTP throughput test. ³VPN throughput measured using UDP traffic at 1280 byte packet size adhering to RFC 2544. *With SonicOS Enhanced. **3G card and modem are not included. See <http://www.sonicwall.com/us/products/cardsupport.html> for supported USB devices.



Sonicwall Certified Reseller



Tel North: 0151 2031400 Tel South: 0118 9071600

Email: Info@castleforce.co.uk Web: www.castleforce.co.uk

IT Security Reseller – Penetration Testing – IT Security Consultancy – IT Security Awareness Training