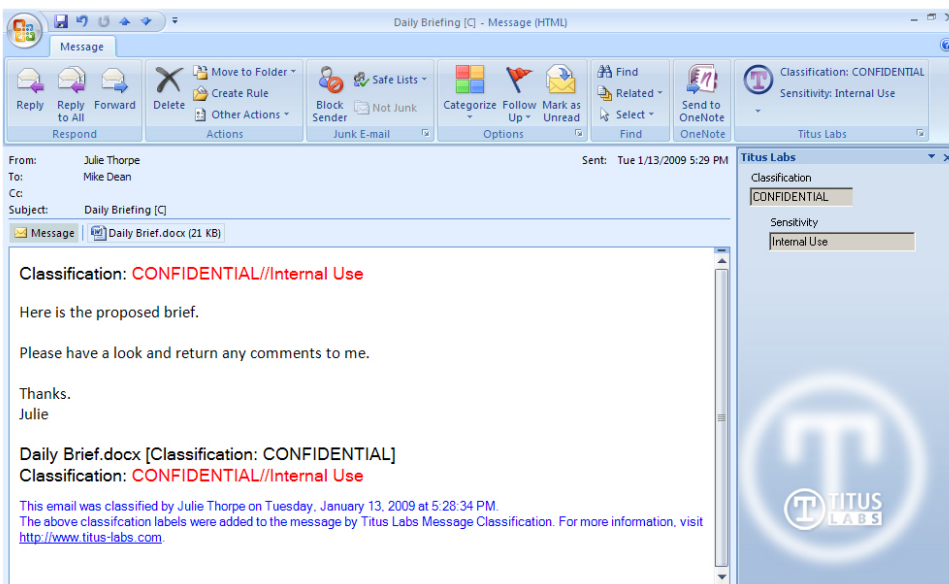


Titus Labs Message Classification for Microsoft Outlook® and Outlook Web Access®

Organizations today must balance the need to share information electronically, while protecting highly sensitive information from falling into the wrong hands. In addition, they must manage the large volumes of unstructured data generated through email. This poses challenges for intelligent archiving, efficient e-Discovery, and reliable data loss prevention (DLP).

Titus Labs Message Classification is a classification and policy enforcement tool that ensures that all Microsoft Outlook and Outlook Web Access messages are classified before they can be sent. Labels are fully customizable to meet internal and regulatory marking standards, and can be used to indicate any type of information, including data sensitivity (Public, Confidential), department (HR, Finance), and retention period (Archive for 30 Days). Users add classifications with a simple and intuitive interface that is integrated into their regular Outlook workflow.

By enabling users to classify emails upon creation, organizations can add structure to the vast number of emails that are sent every day. This helps to prevent inadvertent disclosure, comply with internal and regulatory marking standards, and enhance infrastructure solutions such as archiving, DLP, and encryption.



Message Classification supports the Outlook 2007 Ribbon Interface

Titus Labs Message Classification is an email labeling solution for Microsoft Outlook and Outlook Web Access that can force users to select classifications before sending an email.

Based on these labels, the software can:

- Apply markings that clearly identify the existence of confidential and private information
- Encourage proper handling of sensitive information for compliance
- Raise security awareness within the organization
- Reduce the likelihood of inadvertent information leakage
- Enforce corporate policy at the desktop

Try it!

To request a free trial, visit our web site at

System Requirements

Titus Labs Message Classification works with Outlook 2003 and Outlook 2007.

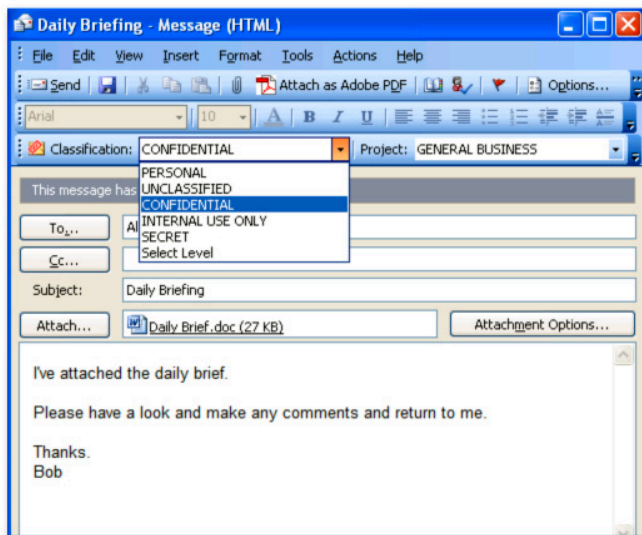
Complementary Titus Labs Products

Document Classification™ for Microsoft Office® provides classification and labeling for Microsoft Word®, Excel®, and PowerPoint® documents.



Message Classification Features and Benefits

Key Features	Benefits
Classification Selector	Prompts users to classify all emails, meeting requests, and tasks, enabling organizations to enforce their classification policies in a simple, non-intrusive way.
Label Marker	Applies visual markings in the email subject line and message body to clearly identify the sensitivity of the information.
Metadata Generator	Creates metadata that can be used to enhance archiving, data loss prevention (DLP), and perimeter security solutions.
Policy Verifier	Inspects the email for policy violations before the message leaves the desktop, and provides instant feedback so that the sender can correct any problems.
Security Enabler	Adds an extra layer of security by automatically encrypting, signing, or RMS-protecting sensitive emails. This optional feature requires S/MIME certificates or Microsoft Rights Management Services™.
Administration Tool	Enables organizations to centrally configure and deploy their classification labels and policies, including support for government classification guidelines such as CAPCO, CUI, ITAR, Australian EPMS, and UK GPMS.



Classifications are simple to select from the integrated toolbar as seen here in Office 2003.

About Titus Labs

Titus Labs is the leading provider of email and document classification software solutions that make it possible for organizations to manage and control the flow of sensitive information inside and outside their enterprise and to meet policy and compliance requirements. Titus Labs Message and Document Classification solutions allow companies in the military, government, financial services, and healthcare industries to share information securely. Titus Labs solutions help enterprises adhere to information security regulations such as Sarbanes-Oxley, NASD 2711, HIPAA and others. Based in Ottawa, Canada, Titus Labs is privately held. For more information on the company, visit us at www.titus-labs.com.



Corporate Headquarters
 200G - 356 Woodroffe Avenue
 Ottawa, ON, CANADA K2A 3V6
 Phone: 613-820-5111 x127
 Fax: 613-820-5154
 info@titus-labs.com

Titus Labs USA
 usa@titus-labs.com

Titus Labs Asia-Pacific
 apac@titus-labs.com

Titus Labs UK
 emea@titus-labs.com

www.titus-labs.com