

VoIP View

Voice Over (VoIP) Call Analysis Module

VoIP View Call Analysis Module can help address the challenge today's organisations face as they contend with increasingly complex network environments that feature VoIP (Voice over IP).

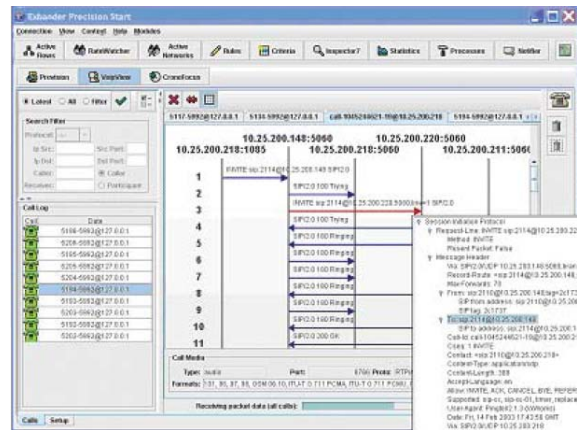
Implemented as an add-on module to DBAM's Exbander Precision devices (excluding EP60), VoIP View provides Network Managers and administrators with powerful real time call analysis and problem troubleshooting intelligence. VoIP View's easy-to-use interface provides management tools to ensure voice service and enables managers to comply with service legislation such as "Lawful Intercept".

VoIP View User Interface

VoIP View gives operators and organisations new visibility into signalling and call failures, based on real time analysis.

The easy-to-use interface displays all active calls in the call log window, with functionality that allows each to be individually traced.

Flow diagrams show traces in a range of colours providing easy representation of attention levels and the network element.



FEATURES	BENEFITS
Real-Time Call Traces across multiple points in a network and across multiple telephony technologies.	Indicates where anomalies and failures occur across the network in VoIP calls
Find problems with easy clicks of the mouse	Enables quick problem isolation and reduces customer frustration
Displays call status, and Call setup time	Enables quick identification of call performance
Call Sequence Diagram displays call sequence in ladder form between different network elements	Provides valuable direct marketing information for customer "win back" and "retention" programmes
VoIP protocol support including SIP, H.225, and H.245	Diagrams support calls that use these protocols. Calls are simulated in VoIP View diagrams and are represented with red, blue and green highlighting attention levels and times
Per packet isolation	Drill down capabilities from call trace or call sequence diagram to individual messages
Multi-user capability extends the value of the solution	Supporting multiple users' needs and applications with a single hardware deployment
Distributed hardware	Provides a flexible solution for customers
All-in-one hardware and software solution	Precision provides voice, data, video and mobile signalling monitoring and management
Lets users set up traces based on multiple criteria (MAC-port L7, etc)	Easy search criteria and extends the use of Precision
Users can set up a feed from multiple traces to track multiple calls or phone handsets	Multiple users can receive from the same trace (they subscribe to a service as a listener)
Users set the data rate back to themselves	Allowing control over the data consuming too much bandwidth
Users can search for diagrams from similar addresses that have similar failure points etc	By clicking on the VoIP Flow diagram the raw packet data are shown for each of the call steps
Call data can be stored at the Precision device, or at another device	Enables compliance with lawful intervention legislation

Castleforce IT Consultancy Ltd

Registered Office: The Summit, Thorsway, Caldy, Wirral, CH48 2JJ Tel: 0151 2031400
 Sales Office: Enterprise Centre, University of Reading, Earley Gate, Reading Berkshire, RG6 6BZ Tel: 0118 9071600
 Email: Info@castleforce.com Web: www.castleforce.com



IT Security & Business Continuity Specialists
 Sales, Support, Consultancy, Training
 Penetration Testing and Risk Assessments