

eSoft

Simply better network security.™



ThreatWall 250

ThreatWall 450

ThreatWall 650

# ThreatWall

## Features at a glance:

- 30 Content Categories with Millions of URLs
- Virus, Worm and Trojan Protection
- Spyware Protection
- Instant Messaging and P2P Security
- Access Control to MySpace®, Friendster® and other Social Networking Sites
- Application-level Web Server Security
- Custom Categories
- User, Group, Day and Time Policies
- Active Directory Integration
- Summary and Detailed Reporting
- Custom White/Black Lists
- Custom URLs
- High-capacity Web Caching
- Custom Block Message
- LAN Bypass Hardware Circuitry
- RAID-mirrored Storage

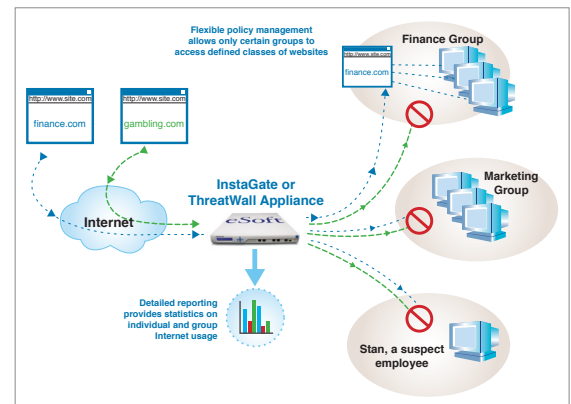
## ThreatWall™ Web Security Gateway

### Total Web Security, Monitoring, Access Control and Reporting

The ThreatWall Web Security Gateway provides every resource needed to ensure maximum workforce security and productivity by monitoring and enforcing the use of Internet resources. The Web Security Gateway also protects against legal liability brought on by inappropriate/illegal use of Internet resources. Policy based control allows selection of which categories should be blocked at different times of day, and which users are affected. Hardware features such as high-capacity web caching and LAN-bypass circuitry assure maximum performance and network continuity.

### Policy-Based Web Monitoring and Filtering

ThreatWall appliances were purpose-built to withstand with the rigors of Deep Packet Inspection security, augmenting the existing firewall to provide critical security functions such as Anti-Virus, Anti-Spam, Anti-Phishing, mail content filtering, web content filtering and more. From scanning millions of email messages a day for Spam, Viruses, Trojans, Phishing or general inappropriate content, to filtering thousands of concurrent web sessions for ethical or appropriate use, ThreatWall appliances deploy seamlessly into the existing network and provide silent, high-speed Deep Packet security. Whats more, ThreatWall appliances scan both inbound and outbound traffic in transparent in-line mode, or in proxy relay mode, providing ultimate deployment flexibility for virtually any network topology.



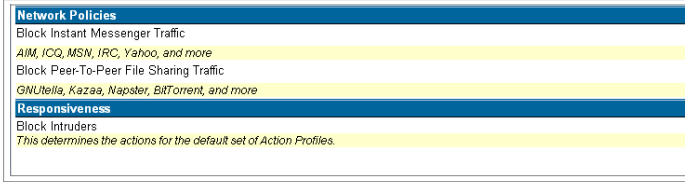
### IM and P2P Control

Instant Messaging and P2P networking pose a significant risk to the organization due to the file swapping and messaging capabilities of the systems, as well as the proprietary nature of the protocols. The Web Security Gateway monitors and enforces access to these sites on a user or group



basis, protecting the organization from risks posed by these sites, as well as enhancing employee productivity. Policy can be set on a coarse 'all on/off' basis, or by service type (e.g. allow Jabber IM communications, but not MSN or AOL).

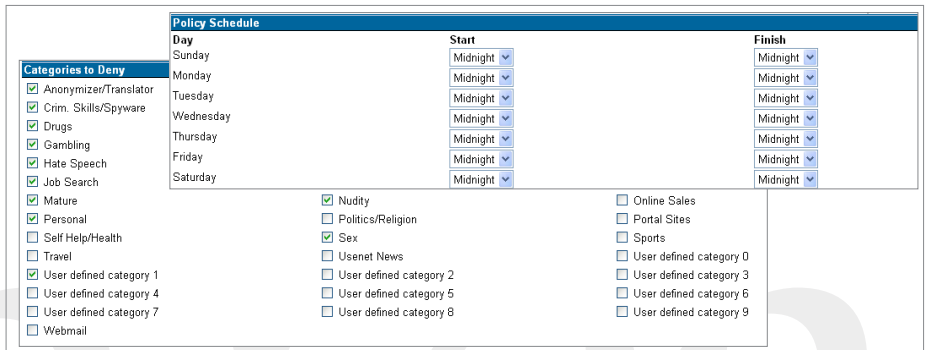
**IM, P2P and other communications protocols can be enabled/disabled by coarse (shown) or fine-grained controls**



**Protection from Spyware and Web Application Attacks**

By filtering Spyware, Phishing and other malicious Internet content, the Web Security Gateway is an effective tool for implementing Internet security policies. The large URL database of Spyware, Phishing and other sites is updated automatically with newly categorized websites

through eSoft's patented SoftPak Director™ threat response architecture, and administrators can add their own custom URLs to the database. Combined with an access control list that allows the IT manager to assign different content categories to various groups within the organization, the Gateway offers a highly customized and fine-grained web security and access policy. While many web filtering solutions on the market provide user-level protection, the Web Security Gateway also provides application-layer protection against web server attacks such as web site cross-scripting and buffer overflows.



**Comprehensive Web Access Control**

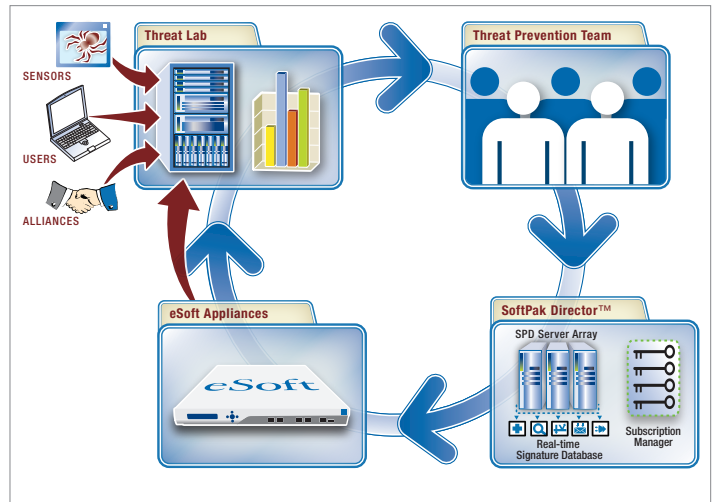
In addition to stopping web-based Viruses, Worms and Spyware, the Web Security Gateway is an essential tool for implementing Internet security policies and user guidelines by blocking irrelevant and unproductive Internet content. The system manages web access, reduces the exposure of potential legal liability to the organization, preserves network bandwidth otherwise consumed by surfing the Internet and reduces the time and expertise required of vital support resources.

**eSoft's Distributed Intelligence Architecture™**

The ThreatWall Web Security Gateway is powered by eSoft's patented\*\* Distributed Intelligence Architecture™ (DIA).

DIA incorporates a worldwide network of sensors, current users, and industry alliances working in conjunction with eSoft's ThreatLabs and Threat Prevention Team to provide the fastest, most reliable and scalable security infrastructure in the industry. The result is a proven system that guarantees every eSoft customer is protected at the highest level possible, all the time.

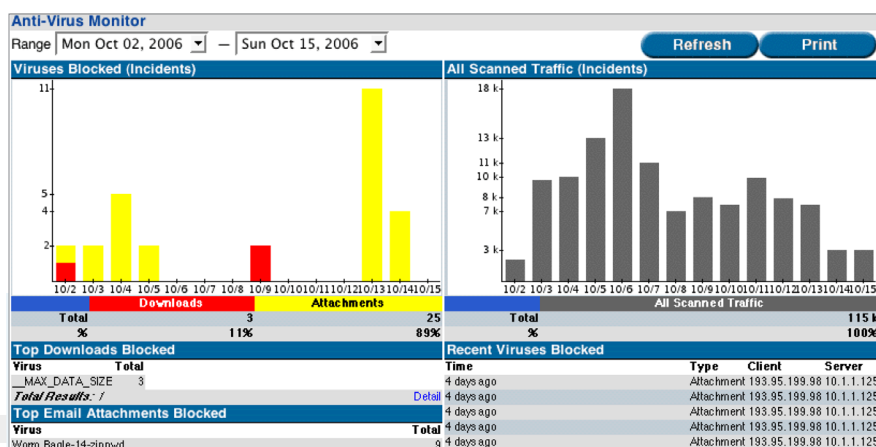
DIA ensures early protection from new web-based threats regardless of whether the threat is a malicious hacker, a compromised website or an infected download. With continuous scanning, eSoft Threat Labs find websites and malicious downloads before they compromise our customers. New threats are categorized, distributed by SoftPak Director, and blocked before they are ever seen.



\*\* U.S. Patent No. 6,961,773 B2

## Simple Administration and Maintenance

The Gateway deploys seamlessly with easy-to-understand wizards and integrates with most LDAP, Active Directory or RADIUS authentication environments. Once installed, ThreatMonitor™, a graphical management tool, helps IT managers better understand the behavior of web traffic and network threat activity as well as organizational web usage. The result is a system that is easy to deploy without requiring extensive training and time investment. Best of all, the eSoft Web Security Gateway has no user-based licensing, assuring the system will grow cost-effectively with the organization over time.



Summary reporting and statistics helps the organization understand its web use patterns, as well as security risks



A detailed ThreatMap shows the origination of web-based threats that have impacted the local network

## Ultimate Email Security... Ultimate Scalability

eSoft's Web Security Gateway provides the IT organization with unparalleled scalability. With the simple addition of optional SoftPaks and ThreatPaks, the system can easily be configured for high-performance Email Security, Network Application Security, and even as an Email/Webmail Server:



### Email ThreatPak

Email ThreatPak contains everything needed for email security, content filtering, quarantine, user management and spam mitigation. The latest Spam-fighting technology is combined with a powerful Anti-Virus and content scanning engine to provide affordable, comprehensive protection from both external and internal threats.



### Network ThreatPak

Designed to augment an organization's existing Firewall to combat modern content-based threats, Network ThreatPak combines Active Intrusion Prevention, multi-protocol Anti-Virus and comprehensive Anti-Spyware with Instant Messaging (IM) and Peer-to-Peer (P2P) control for complete network protection.



### Email / Webmail Server

For a cost-effective, feature-rich alternative to Outlook/Exchange or Lotus Notes. Features include: SMTP/POP3/IMAP email server, compatibility with any email client, User/Group definable privileges, distribution lists, shared calendaring/contacts\*, configurable forwarding/aliasing/auto-responder, sender/local address verification, SPF, SSL encrypted connections (TLS), authenticated SMTP, Active Directory integration, multi-drop capable, multiple domain support.

\*Future release

**Part Numbers****Web Security Gateway 1 Year Subscription**

ThreatWall 250	TW-250-W
ThreatWall 450	TW-450-W
ThreatWall 650	TW-650-W

**Web Security Updates 1 Year Subscription**

ThreatWall 250	TW250-WEB1
ThreatWall 450	TW450-WEB1
ThreatWall 650	TW650-WEB1

Custom pricing available

Please visit [esoft.com](http://esoft.com) for additional part numbers

**Feature Specifications****Web Filtering**

- 40 Pre-defined categories
- Admin defined categories
- User, Group, Day and Time policies
- Custom policies
- IP lookups
- Custom white/black lists
- Custom URLs
- High-capacity caching for faster response times
- Customizable block message

**IM, P2P and Social Networking Security**

- Instant Messaging monitoring and blocking
- P2P monitoring and blocking
- IM and P2P access alarming
- Access control to MySpace, Friendster and other Social Networking sites

**Web Server Protection**

- Cross scripting
- SQL Injection
- Backdoor attacks
- Buffer overflows

**Web Security**

- Virus, Worm and Trojan protection
- Anti-Spyware website blocking
- Spyware download prevention:
  - Embedded and drive-by installs
  - FTP download
  - P2P download
  - Browser exploit
- Active content monitoring for rouge ActiveX controls, Flash, JavaScript and others
- Protects IE and Firefox vulnerabilities
- Detects internal network infections

**Management Features**

- Reports, statistics and graphs
- LDAP/Active Directory integration
- Automatic signature updates
- Virtual push technology\*
- Backup/Restore
- Summary and Detailed Reporting
- SNMP, NTP
- Context-sensitive help
- Log Management
- Syslog support
- WELF formatting

\*Future release

**Technical Specifications**

	ThreatWall 250	ThreatWall 450	ThreatWall 650
Chassis	Desktop	1 u Rackmount	2 u Rackmount
Memory	256 MB DDR2, 533 MHz	512 MB DDR2, 667 MHz	1 GB DDR2, 667 MHz
Interfaces	4 Fast Ethernet	4 Gigabit Ethernet	6 Gigabit Ethernet
Front Panel LCD Display	No	Yes	Yes
Web Cache / Storage	40 GB IDE	80 GB SATA	Dual 120 GB Sata w/ RAID-1 mirroring
LAN Bypass/Failthrough		Optional	Optional
Transparent Mode	Yes	Yes	Yes
Relay (proxy) Mode	Yes	Yes	Yes
Real-time ThreatMonitor	Yes	Yes	Yes
LDAP/Radius/Active Directory Integration	Yes	Yes	Yes
Transparent Authentication	Yes	Yes	Yes
User/Group/Time-based Web Policies	Yes	Yes	Yes
Syslog Support	Yes	Yes	Yes
SNMP	Yes	Yes	Yes
Web Content Filtering	Yes	Yes	Yes
IM/P2P/Social Network Control	Yes	Yes	Yes
Backup/Restore	Yes	Yes	Yes
Web Application Protection	Yes	Yes	Yes
Power Supply	100-240v~1.5A, 47-63Hz	100-240v~6.0A, 50-60Hz	100-240v~6.0A, 50-60Hz
Weight	3.5 lbs. / 1.59kg.	16.5 lbs. / 7.59kg.	19 lbs. / 8.63kg.
Dimensions	9" x 6.5" x 2" / 22x16.51x5.08cm	17.5" x 18" x 1.75" / 44.45x45.72x4.44cm	17.5" x 18" x 3.5" / 44.45x45.72x8.89cm
UL/CUL, TUV, CE, VCCI	Yes	Yes	Yes
FCC	Class A,B	Class A	Class A